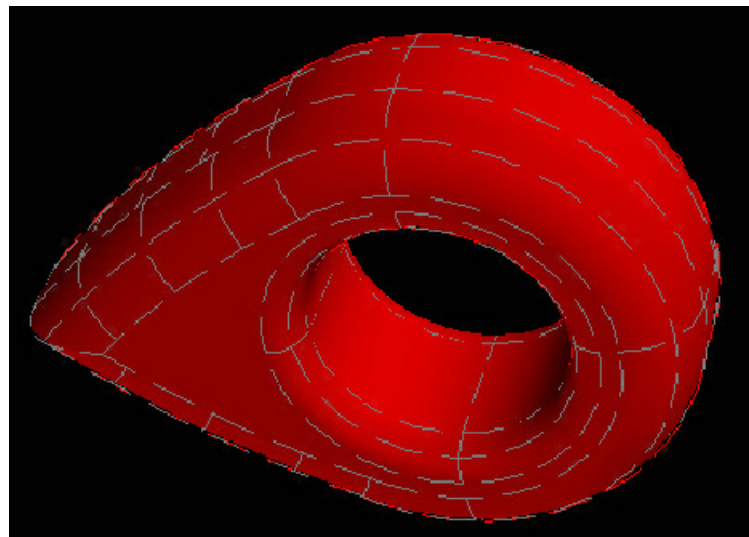
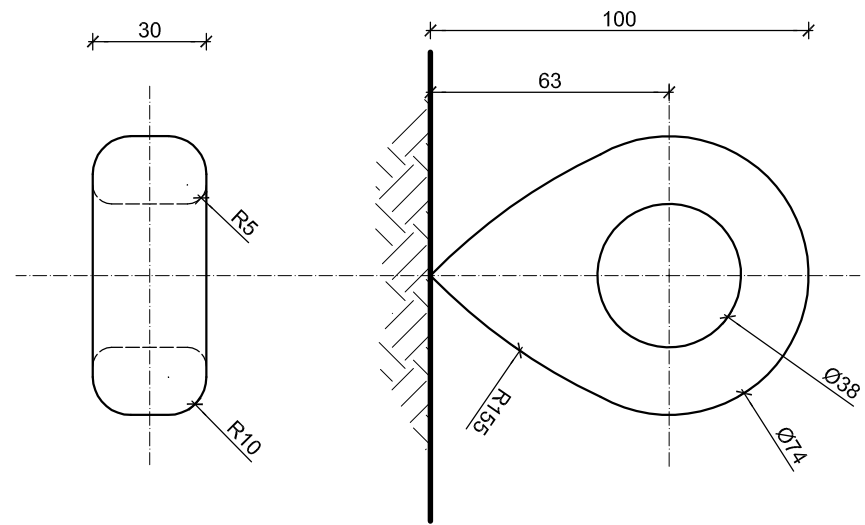
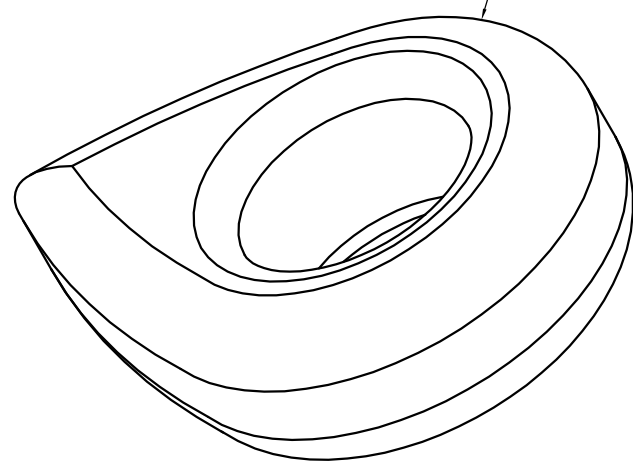


MOJON "LOGO"

escala 1:20

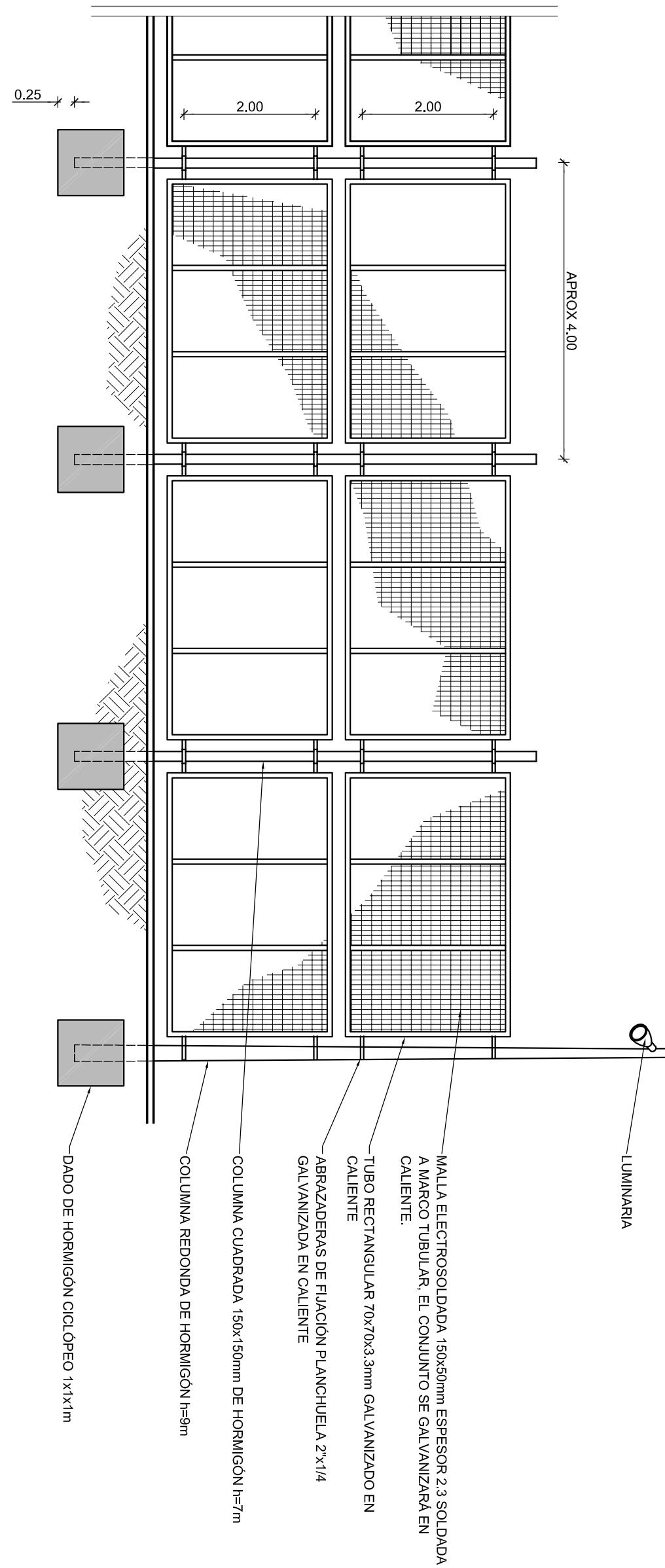


MOJON DE HORMIGON LUSTRADO PINTADO COLO GR
ROSA. EL MOJON SE ENCLAVARÁ EN EL PISO DE
FLAJA FIJAMENTE AL PISO MEDIANTE ANCLAJE
METALICO EMPOTRADO.



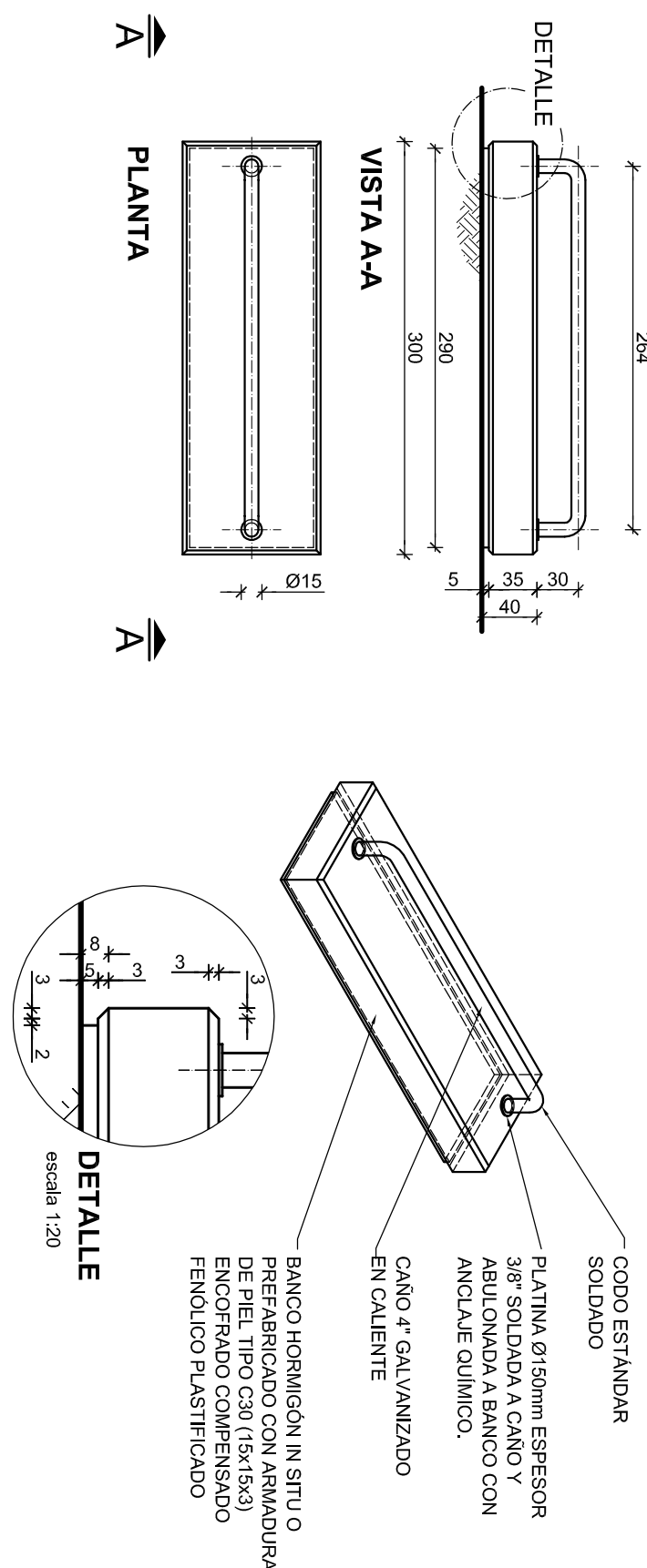
TEJIDO METALICO DE PROTECCION

escala 1:75



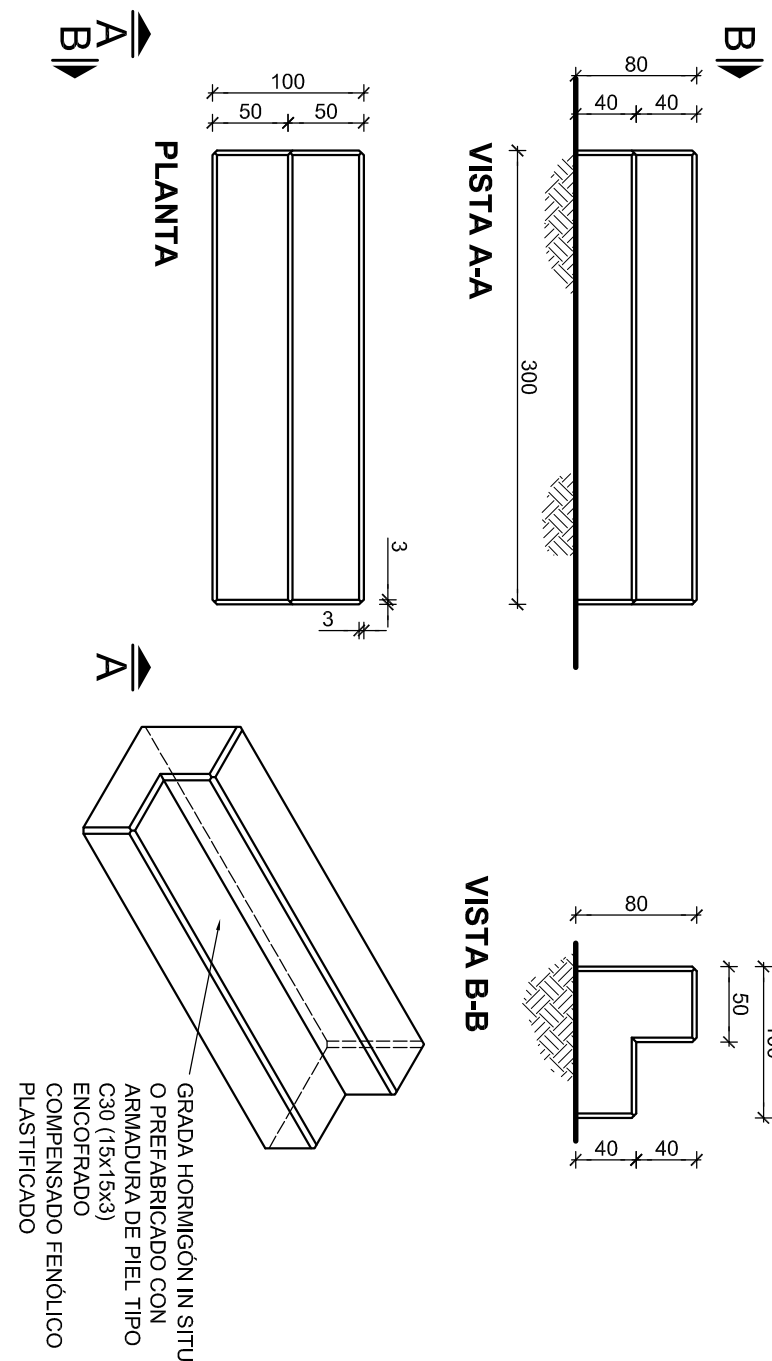
BANCO DE PLAZA

escala 1:50



GRADA

escala 1:50



TABLERO

escala 1:50

